

THE CHILLIWACK LAWN BOWLING CLUB – CELEBRATING ITS 100TH ANNIVERSARY AS THE COMMUNITY’S OLDEST SPORTING ORGANIZATION

This coming week marks the centennial of Chilliwack’s oldest sporting organization, the Chilliwack Lawn Bowling Club (CLBC or the Club). For all but two years of its first century, the Club has been based at the corner of Princess Avenue and Edward Street, 525 metres directly west of Five Corners (see Image #1). The longevity of the CLBC reflects that of the sport of lawn bowling itself, which traces its roots back to 13th century England.

And although lawn bowling has been played since the Middle Ages, it did not formally make its appearance in Chilliwack until the early 1920s. While the game is reasonably straightforward, with minimal equipment requirements, it does require a sizable square of grass of near-golf-green quality. In the early 20th century, although Chilliwack was going on 50 years old, such a piece of dedicated and groomed real estate was not yet in place.

There was certainly much interest in the sport in Chilliwack at that time, particularly from many of the early settlers who had arrived from Ontario with strong British ties, having played the sport extensively in their youth.

It would take one of Chilliwack’s more illustrious citizens, Harry J. Barber, to launch the popular game in the community. Not only was Barber instrumental in introducing lawn bowling to Chilliwack, he also ensured that the sport had a solid basis upon which it could thrive.

Harry Barber (1875-1959) was born in Ontario, and after obtaining his degree in pharmacy, he arrived in Chilliwack in 1898, at age 23. He soon became proprietor of Barber Drugs, a well-known Chilliwack institution which operated for decades at Five Corners. Barber was active in various civic organizations, notably as president of the Chilliwack Board of Trade and chairman of the school board for eight years. He also served as mayor of Chilliwack from 1914 to 1917, and for 15 years, from 1925 to 1940, he was the MP for the Fraser Valley.

As Barber’s pharmacy business continued to grow, in 1919 he purchased one of Chilliwack’s first mansions, “Stonehurst”, on the south side of Yale Road East, between Williams Street and Victor Street (see Image #4). The property’s expansive grounds included gardens and a great lawn. In fact, the front lawn extended east beyond where next door’s Bon Marche building (built in 1950) would eventually be.

Harry Barber was also a lawn bowling enthusiast (see Image #10), and at the urging of like-minded devotees, he decided to turn the great front lawn of his Stonehurst home into Chilliwack’s first lawn bowling green. In spring of 1920, after he had invested some time and money in his yard, Chilliwack’s lawn bowling aficionados started playing regularly on Barber’s front lawn on Yale Road East (see Image #5).

At that point, Chilliwack still had no formal organized lawn bowling club, but that was remedied the following year. On September 29, 1921, at Chilliwack City Hall, the Chilliwack Lawn Bowling Club was formed, with over 100 gentlemen (representing approximately 5% of the City’s population at the time) initially expressing an interest to join.

An incorporated venture called The Chilliwack Lawn Bowling Company Limited (the Company) was also formed at the time (with authorized capital of \$10,000 – see Image #3). The Company’s immediate mandate, in addition to raising capital, was to identify and purchase a suitable site and then construct a bowling green, thus establishing a permanent home for the CLBC, as it knew that it could not much longer continue its operations on Harry Barber’s front lawn.

The Company set the budget for constructing a top-flight bowling green at \$3,500 (\$51,300 in 2021 value). In short order, it obtained an option on three parcels of land on Gore Avenue. However, nothing ever became of the potential Gore Avenue location for the CLBC’s new home, and the search for an appropriate site continued.

The following year, 1922, the Company did find a well-located site for the CLBC's new home and it initiated a somewhat complex purchase transaction. The land in question comprised four vacant lots (see Image #2) at the southeast corner of Princess Avenue and Edward Street, directly across from the nine-year-old Chilliwack Drill Hall (aka the Armouries). Two of the lots were owned by the City of Chilliwack, while the other two belonged to Chilliwack pioneer William Knight.

On June 15, 1922, the Company bought the two lots from the City for \$345 (see Image #23) while two months later, on August 18, 1922, the two remaining lots were purchased from William Knight for \$300. The CLBC's new home would be on a 0.44-acre hexagonally shaped parcel, with frontage of 132 feet on Princess Avenue and 156 feet on Edward Street.

As the Roaring Twenties unfolded, the sport of lawn bowling in Chilliwack was becoming increasingly popular, and pending the Club's completion of its new home the ever-patient and accommodating Harry Barber arranged to have lights strung over his front lawn bowling green in July 1922. This move allowed CLBC members to play longer into the evenings, with late-night traffic on Yale Road East often slowing down or stopping to watch the games.

Meanwhile, construction of CLBC's new bowling green started immediately, and by late September 1922, it was reported that work was "proceeding rapidly on the grounds". Inevitably, Chilliwack's rains and inclement weather soon came, and work on the Club's new home was deferred until 1923.

During the following spring work on CLBC's new home continued, but it was taking longer than anticipated, such are the exacting standards of a well-constructed lawn bowling green. Thus, Harry Barber continued to host the CLBC's members, with the 1923 season unofficially starting on his great front lawn in late March, followed by an organized tournament in late April.

Finally, the CLBC's new base of operations, at 110 Edward Street, was finished and ready for use. The property included a well-constructed 120-foot by 120-foot green, along with a small building that served as a rudimentary locker room and storage facility. With no clubhouse, for the next 12 years the CLBC's business meetings and social events would have to be held at various venues around the city.

The first game of lawn bowling at the CLBC's new home took place on Monday, July 2, 1923 (in pleasant weather, with a high of 75 degrees F). The formal opening ceremony for the new venue was held the following week, on July 11, 1923. There were a number of dignitaries present for the festivities, and Harry Barber spoke to the assembled crowd.

By September 1925, a portion of the lawn bowling green already required "improvement and reconditioning", such was the growing popularity of the sport in Chilliwack. For \$200, the Company retained the services of the greenskeeper at the one-year-old Chilliwack Golf Club on Fairfield Island to complete the required maintenance.

At this time, membership in the CLBC stood at 66, of which 32 were shareholders in the Company. A significant number of those who initially indicated they were prepared to join the newly formed Club back in 1921 never actually followed through on their commitment, but this would be of little consequence.

The formal opening of the 1926 season for the CLBC took place on May 12 - a hot day with the temperature reaching "90 degrees in the shade", as a sizable crowd on hand watched 64 bowlers compete on the 8 rinks.

From its early days, the CLBC established a tradition in Chilliwack which saw the Club's greens and the new lawn bowling season itself officially declared open by the mayor and assorted other dignitaries. After saying a few words to the assembled bowlers and spectators, the mayor would then ceremoniously deliver the first bowl of the season (similar to throwing out the first pitch at a baseball game - see Image #12).

At these opening day events, the Chilliwack Progress would also be on hand, reporting in detail (with accompanying photographs) the festivities of the day. This annual rite of spring in Chilliwack lasted well into the latter part of the 20th century, and has been revived in recent years.

In 1928, the Club affiliated itself with the BC Lawn Bowling Association, and thus its members were permitted to enter provincial competitions, as well as participate in inter-club competitions.

As it is today, the CLBC has always been self-owned and managed, and thus responsibility for undertaking the continuous maintenance required to keep the lawn bowling green in top shape fell to its members. As a result, by 1933 an annual custom had been instituted called the “Good Friday Lawn Rolling” in which members would attend the grounds on Good Friday to work on the green with big rollers, getting it ready for the new season’s imminent opening.

For the first 12 years of the Club’s operation, the game of lawn bowling in Chilliwack had been for gentlemen only. However, on June 8, 1933, the Chilliwack Ladies Lawn Bowling Club was formed at a well-attended meeting at City Hall. The official opening day for the Ladies Club was held at the Edward Street green the following week, on June 14, 1933.

After over a decade of operation, the Club had outgrown the basic structure on its property used for equipment storage, etc., and on May 15, 1935, a dedicated clubhouse, one storey in height, was officially opened. This new building would allow the CLBC to stage some of its social and Club events on its own property, instead of at City Hall or other venues in the City. This original building still exists today as part of a significantly expanded and upgraded structure.

One of the Club’s more prominent members during the 1940s was Wilfred Kipp. In addition to being Chilliwack’s postmaster for the 24-year-period 1925 to 1949, he was also a highly proficient lawn bowler, and he served at one time as the Club’s president. In the early part of the decade, Kipp introduced some intrigue to the local (and provincial) lawn bowling scene when he became the practitioner of a new bowl delivery technique.

The Chilliwack Progress used cryptic adjectives such as “moderne”, “stream-lined”, “new era”, and “revolutionary”, without actually disclosing what Kipp’s new technique was. In July 1943, it was announced that “scouts” from some of Vancouver’s lawn bowling clubs were heading to Chilliwack to study Kipp’s new approach to the age-old sport of lawn bowling.

Lawn bowling held a prominent position in Chilliwack’s sporting and social landscape during the 20th century. The annual Opening Day (see Image #9), the first bowl of the season, getting the green prepared for the season, games’ results, the Club’s annual general meeting (see Image #8), awards dinners, the annual Christmas dinner, etc. were all regularly and extensively covered by the Chilliwack Progress, often with photographs.

By 1958, membership in the CLBC stood at 74 bowlers, with 59 men and 15 women. Long before this time, the Club’s 1935 one-storey clubhouse had been deemed inadequate for its needs, and an ambitious \$3,500 expansion was completed prior to the season’s Opening Day on April 23, 1958 (see Image #12).

The large-scale remodelling of the aging one-storey structure first involved its ceiling being lowered, with the resulting space turned into a functional locker room (see Image #18) and storeroom, with a concrete floor. This lowering of the main floor ceiling, along with adding a further 4 feet in height and 14 feet in length to the overall structure, resulted in a new second floor for the clubhouse.

This new and improved space allowed the Club the capacity to now accommodate all its social and business events. Further, a new roof was installed, along with a kitchen and ladies’ clubroom on the new upper floor.

By 1967, partly due to changing demographics and priorities, the Club believed that its membership, and consequently its finances, were unacceptably low. Thus, on September 27 of that year the Club became a

Society, as it was hoped that this status would allow it to attract more members, while only charging them a nominal fee. At that time, the Company was wound up.

New members of the Society were not allowed to bowl, but they could watch games, attend and vote at meetings, and participate in social functions. If Society members did want to bowl, they would have to pay additional fees for that privilege.

The impetus behind this 1968 membership drive was an attempt to raise funds to replace rotting fencing and posts (some almost 40 years old) around the Club's property. Similarly, some light standards had deteriorated and needed replacement. However, the Club's change in status to a "Society" did not result in the additional members and revenues that had been anticipated, and thus the new name did not last long, and soon "Club" was back in place.

The Club subsequently applied to the City of Chilliwack for a grant of financial assistance. This request was considered reasonable based on the fact that in 1968 the CLBC's bowling green was the only one in BC that was owned and funded by its membership. All other clubs in BC were maintained by parks boards or cities. After considering the Club's request for several months, in October 1968 the City decided to approve a grant for 1969.

The Club's annual membership fees have been historically low by relative measures. In 1953, annual dues were set at \$20 for regular bowlers and \$12 for first-time novice joiners. Between 1953 and 1990 fees rose by an average of 2.5% per year, with 1990 dues set at \$50 for all members, regardless of status.

In the spring of 1975, the CLBC's clubhouse again underwent extensive renovations. Funded by a federal New Horizons grant, the top floor of the structure was extended six feet to the north. In addition to providing more space, this extension resulted in some "overhang" cover on hot or wet days for those who sat on the benches outside the first-floor locker/storage room.

Also included in the 1975 renovations were an expanded kitchen, a new heating system, and a new roof on the building. One of the goals of the renovation was to enable the clubhouse to be utilized on a year-round basis, both by the Club and the general public. It was hoped that additional revenue could be generated by renting out the clubhouse for wedding receptions, small parties, etc. All renovation work was completed in time for Opening Day of the 1975 season, which was May 24th.

Funding and membership numbers continued to be issues for the Club for the remainder of the 20th century. Accordingly it availed itself of property tax relief offered by the City, as well as applying for and receiving various grants from other entities for new equipment and clubhouse repairs.

In 2003, with the Club's bowling green in top condition and its clubhouse well-scrubbed, it successfully hosted the lawn bowling segment of the 2003 BC Seniors Games to positive reviews.

From the outset, the CLBC instituted a number of annual competitions/tournaments among its members based on gender, experience, mixed groupings, etc. For each competition, a trophy or plaque was obtained or donated, and each year the winners' names would be noted on the hardware in question (see Image #20). At either the Club's annual general meeting or a dedicated awards dinner, winners in all categories would be recognized and duly reported in the Chilliwack Progress.

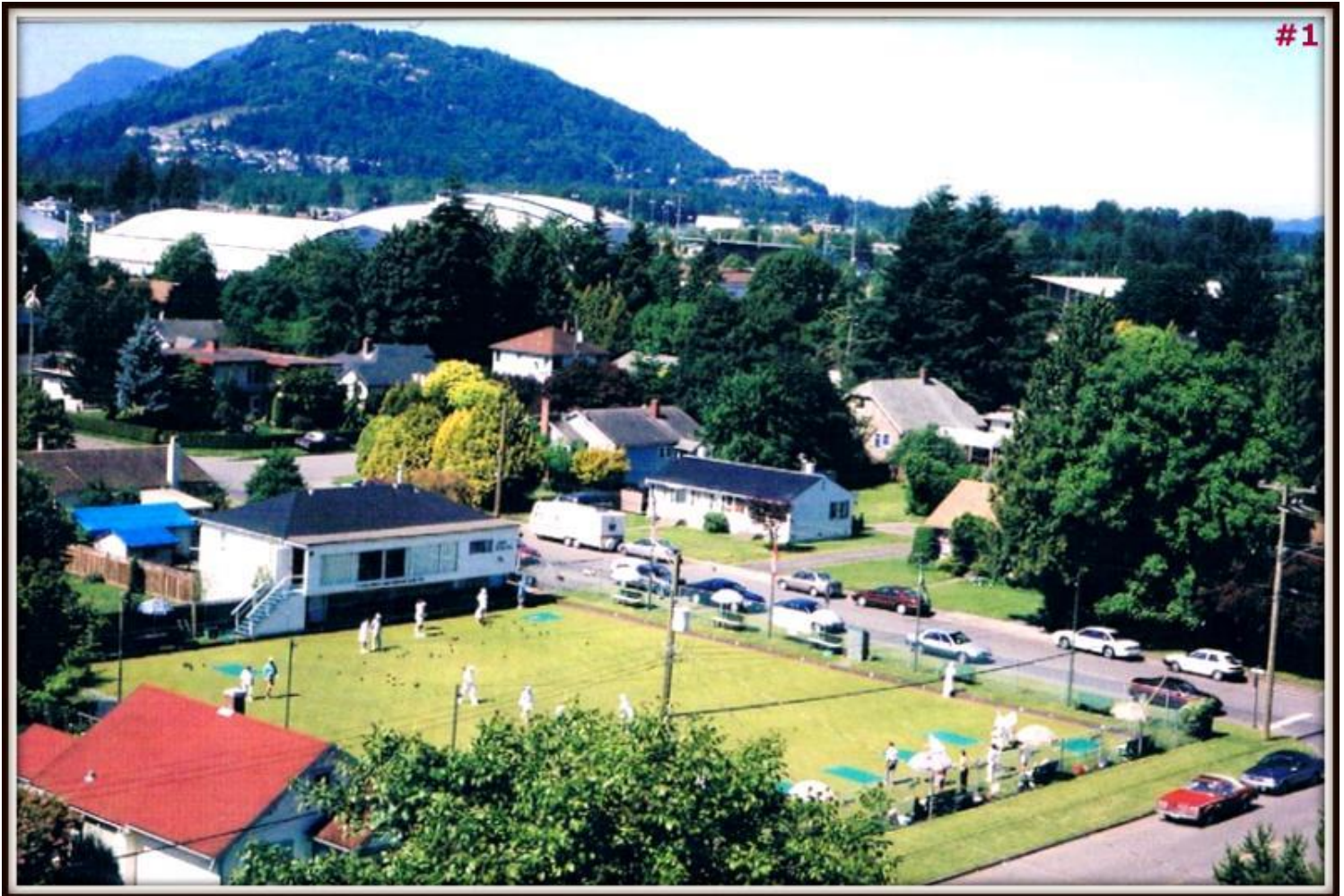
Many of these trophies are now on the second version of themselves, as eventually there was no room left to add new winners' names to the original hardware. On the second floor of the CLBC's clubhouse, some walls are adorned with plaques commemorating various competitions over the years, along with several full trophy cases.

Today, perhaps in response to the pandemic, the sport of lawn bowling is experiencing a resurgence in interest on a global basis, including Chilliwack. Accordingly, as it embarks on its second century, the Club is investing in its infrastructure, as evidenced by installation of new backboards in 2021 (enabled by a federal grant) along with

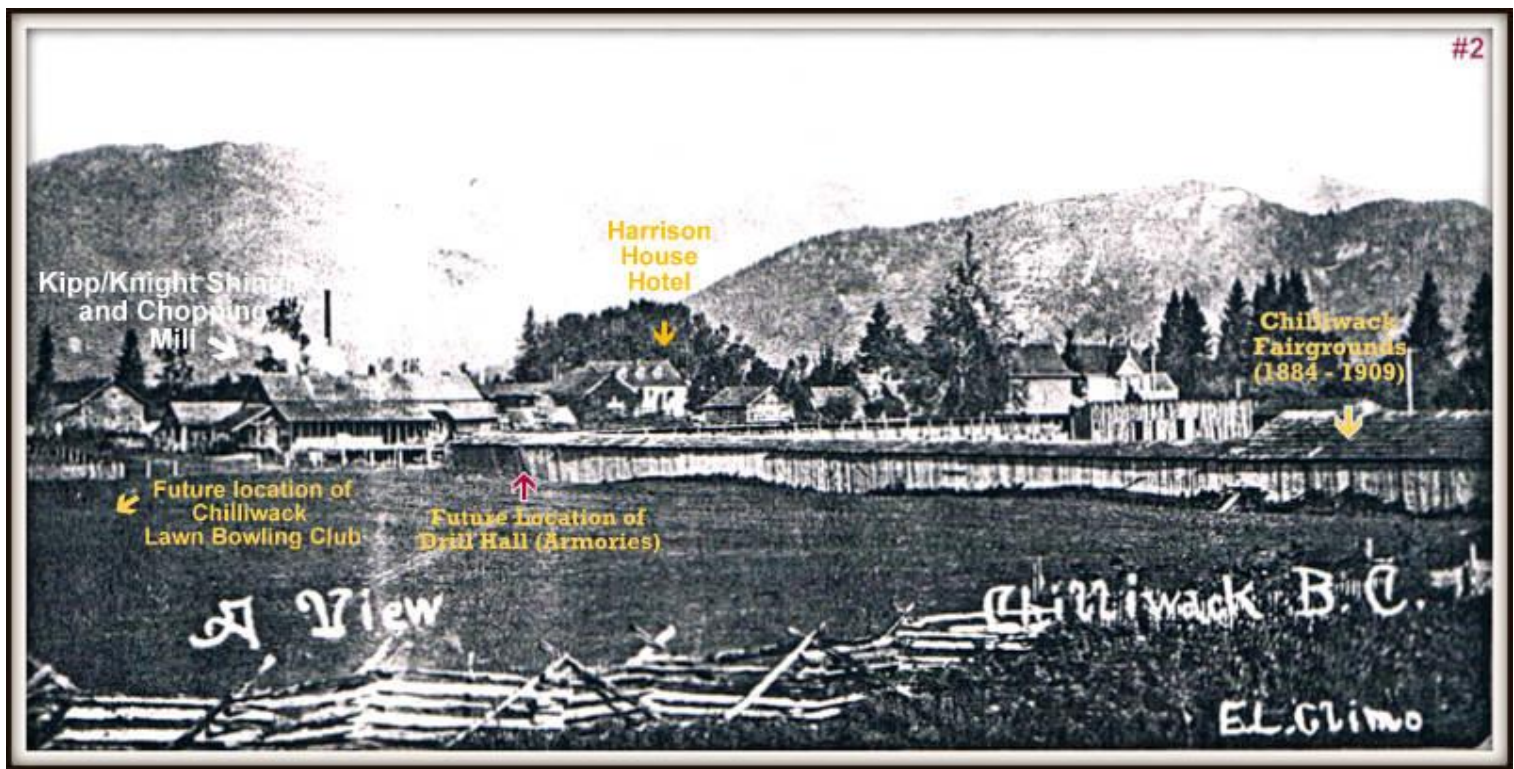
plans to recondition its green in time for Opening Day 2022. Further, it is undertaking a marketing campaign to attract new members (with such efforts having been largely curtailed of late due to pandemic restrictions).

The Chilliwack Lawn Bowling Club, situated at 9350 Edward Street, is Chilliwack's oldest sports club in continuous operation - this week celebrating 100 years in the community. Unlike many other areas of old Chilliwack, the immediate surroundings of the Club have remained largely unchanged over the years, perhaps appropriately in keeping with the stability of lawn bowling as a timeless outdoor pastime appealing to all, regardless of age, gender, or location.

IMAGES: There are 23 images accompanying this article, each with a detailed narrative.



#1 - This 2005 image, facing southwest towards the Chilliwack Lawn Bowling Club's premises at 9350 Edward Street, was captured from the top floor of the Princess Towers condominium complex situated near the northwest corner of Princess Avenue and Mary Street. The lawn bowling green, at the southeast corner of Princess Avenue and Edward Street, was acquired by the Club in 1922 and the first game of lawn bowling took place on July 2, 1923. As evident in the photo, most of the Club's eight rinks were in use on this day 16 years ago. Note that members wore white clothing at that time – a custom dating back to the sport's earlier days, but which has since been largely discontinued around the world, including at the Chilliwack Lawn Bowling Club. Also note in the image both the original Chilliwack Coliseum (demolished in 2005) and the second Chilliwack Coliseum (opened in 2004). Chilliwack Mountain looks down upon Chilliwack in the background of the shot. (Image Credit: Chilliwack Lawn Bowling Club)



#2 - This circa 1895 northwest-facing image was captured from near what would become the corner of Mary Street and Kipp Avenue. Identified to the left of the photo is the future location of the Chilliwack Lawn Bowling Club (1922-present), just vacant land at that point. The site of the Club's longtime neighbour across the street, the Drill Hall (aka the Armouries, 1913-present), forms part of the fenced-in southwest portion of Chilliwack's first Fair Grounds (1884-1909). Also evident in the shot is that Princess Avenue West (nee Alma Street) did not exist in 1895. Directly to the left (west) of the future site of the Drill Hall (where today's Edward Park is located) is the lumber mill owned by Isaac Kipp and his son-in-law William Knight. In the background of the image, the Harrison House Hotel (1891-1919) can be seen near the corner of Corbould Street and Wellington Avenue. (Image Credit: Chilliwack History Perspectives Collection)

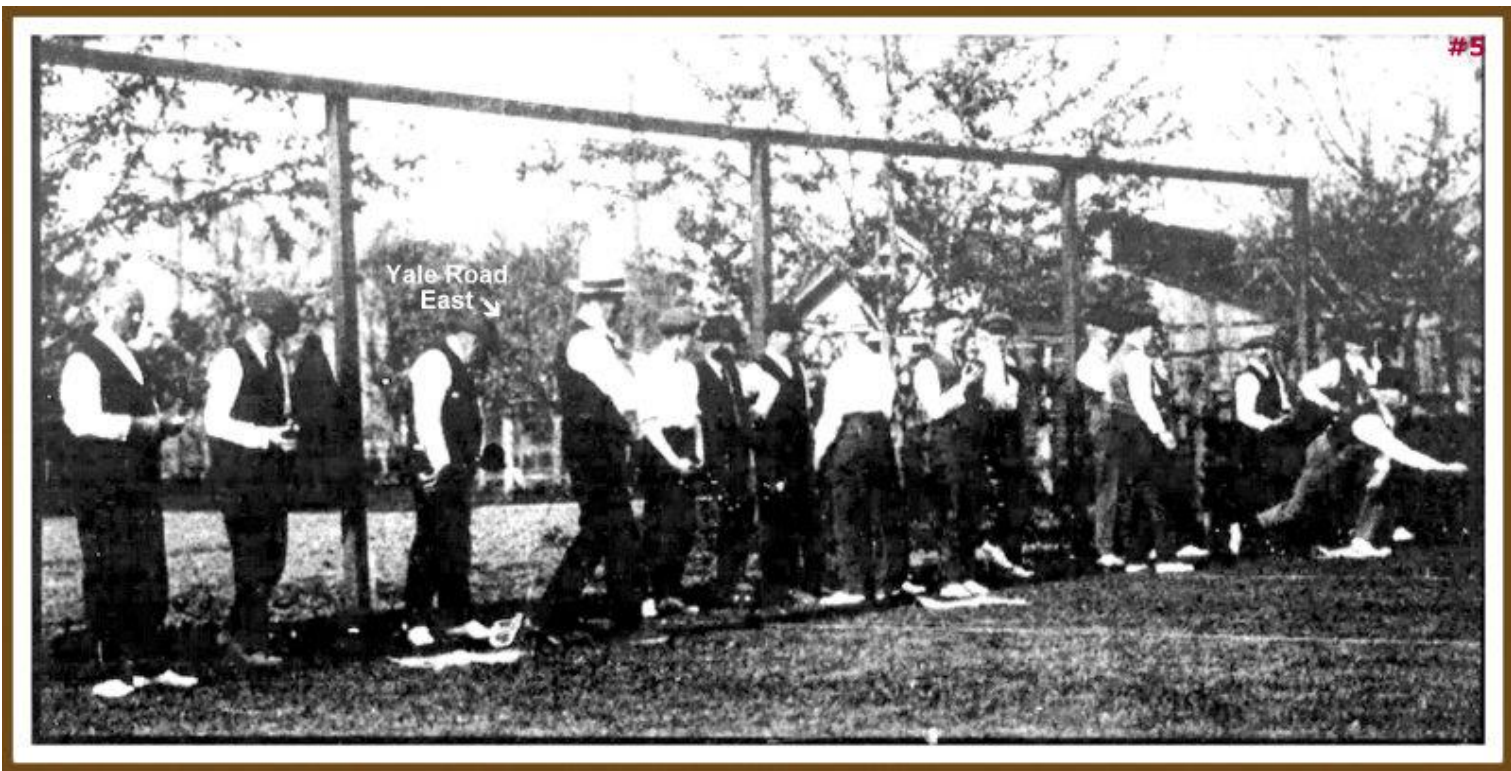


#3 - When the Chilliwack Lawn Bowling Club was formed on September 29, 1921, an incorporated venture called The Chilliwack Lawn Bowling Company Limited (the Company) was also created (with authorized capital of \$10,000). The Company's immediate mandate, in addition to raising capital, was to identify and purchase a suitable site to construct a bowling green, thus establishing a permanent home for the CLBC. In 1925, approximately half of the Club's 66 members were also shareholders in the Company. On September 27, 1967, the Company was closed out when the Chilliwack Lawn Bowling Society was formed. This image presents a representative example of the Company's share certificates issued to shareholders, this one for two shares subscribed for by Edgar D. Wall and issued on February 14, 1924 (subscription price of \$10.00 per share). (Image Credit: Yvonne Hustins Collection)



#4 - In 1919, Harry J. Barber, the “father” of lawn bowling in Chilliwack, purchased one of the city’s first mansions, “Stonehurst”, on the south side of Yale Road East, between Williams Street and Victor Street. The property’s expansive grounds included gardens and a great east-west lawn. Barber was also a lawn bowling enthusiast, and at the urging of like-minded devotees, he decided to turn the front lawn of his Stonehurst home into Chilliwack’s first lawn bowling green. The Chilliwack Lawn Bowling Club bowled on this front lawn until early summer of 1923, when its new home at the corner of Princess Avenue and Edward Street was opened.

This circa 1925 image of Stonehurst, facing south from Yale Road East, was captured two years after the CLBC stopped bowling on Harry Barber’s great front lawn. After the Club’s departure, Barber soon replanted the lawn with trees and other vegetation, as evident in the photo. A quarter century later, this lawn would be developed with the Bon Marche store. Note the lack of development around Stonehurst at that time. (Image Credit: Robert O’Brennan Collection)



#5 - This 1921 image, facing northeast towards Yale Road East, captures a group of Chilliwack Lawn Bowling Club members enjoying their game on the great front lawn of Harry Barber's home, Stonehurst Manor, on Yale Road East. From 1920 until early summer 1923, the future home of the Bon Marché Block was employed as Chilliwack's first lawn bowling green. In 1922, after Barber had lights strung over his front lawn bowling green to allow the Club's members to play longer into the evenings, late-night traffic on Yale Road East would often slow down or stop in front of Stonehurst to watch the games. Note how well the lawn bowlers (all male at that time) are dressed – shirts and ties, vests, hats, etc. The CLBC's new home at the corner of Princess Avenue and Edward Street opened in July 1923, and normality immediately returned to Barber's front lawn, which he soon planted over with trees and other vegetation (see Image #4). (Image Credit: Chilliwack Museum and Archives Collection, Photo Number: 1984.057.001)



#6 - This 2015 southeast-facing image captures the location of Harry Barber's home, Stonehurst, at 46290 Yale Road East, in a current context. From 1920 to early 1923, Stonehurst was also the home of Chilliwack's first lawn bowling green, situated on Barber's great front lawn, which today is the location of the Bon Marche Block. Stonehurst, which Barber owned for 28 years, remains one of the few homes in the Chilliwack area to be built of stone. Today there is nothing on the site to signify that it was the first home (albeit for a short period) of the Chilliwack Lawn Bowling Club. (Image Credit: Chilliwack History Perspectives Collection)



#7 - This circa 1925 north-facing image was captured on the CLBC's two-year-old green. Note the manicured lawn, the well-dressed gentlemen bowlers, the vintage automobiles, and in the background the Drill Hall directly across the street on Princess Avenue. This photo was taken from the same perspective as Image #19, but 96 years earlier. A comparison of the two shots shows a number of changes in the immediate area, including parallel parking on Princess Avenue not in effect then, alterations to the Drill Hall, housing to the east of the Drill Hall, and tall trees now in place. Also, the bowling green was in better shape at that time, absent the "heat domes" of recent times. (Image Credit: Chilliwack Lawn Bowling Club)

K. A. Boyd Is New #8 President Chilliwack Lawn Bowling Club

The 12th annual meeting of the Chilliwack Lawn Bowling Club was held at the City hall Wednesday, about forty members being in attendance. The retiring president, Chas. Fox, in his annual report, gave an outline of the club's activities, which showed that an enjoyable and profitable time had been had by all.

Chas. Fox, retiring president, and Ward Sharp, retiring secretary-treasurer, who had faithfully looked after their official duties for the past two years, regretted their inability to take on these duties for another term, and their resignations were reluctantly accepted and a hearty vote of thanks accorded them and all retiring officers for the efficient manner in which they had carried out their duties.

Other officers also reported, showing that the club was a real asset to the community.

Election of officers for 1934 resulted as follows: K. A. Boyd, president; H. J. Harding, vice-president; A. Manfield, secretary-treasurer. Executive: J. Mallot, C. J. Whittaker, S. Creasey, J. W. Fletcher, C. H. Fogg, C. Mitchell, B. W. Harris, J. C. Johnson.

Skips for 1934: A. H. Turvey, J. C. Johnson, W. Sharp, R. B. Sutherland, C. J. Whittaker, J. Mallot, H. C. Fox, P. H. Wilson, K. A. Boyd, J. McConnell, D. Richardson, B. T. Malcolm, C. Parker, H. J. Harding, E. C. Smith.

The opening day has been set for Wednesday, May 9, when the annual classic, President vs. Vice-President teams will engage.

It is rumored that the club will have a new clubhouse, and the lighting effects are due for improvement.

The ladies' club started last year shows signs of steady growth. The club extends hearty greetings to any lady or gentleman who would like to spend an enjoyable afternoon or evening at one of the prettiest places in Chilliwack.

#8 - During much of the 20th century, most anything involving the Chilliwack Lawn Bowling Club was considered newsworthy in Chilliwack. The Chilliwack Progress regularly and extensively reported on various Club happenings such as the annual Opening Day, the first bowl of the season, getting the green prepared for the season, games' results, the Club's annual general meeting, awards dinners, the annual Christmas dinner, and so on. This image presents an example of the newspaper's reporting of the Club's activities over the years, in this case the Annual General Meeting of 1934. The article concludes by stating that the Club's venue is "one of the prettiest places in Chilliwack". Note that the AGM was held in City Hall, as the new clubhouse was not completed until the following year. (Image Credit: Chilliwack Progress Archives)

Twenty-first Annual

OFFICIAL OPENING

Chilliwack Lawn Bowling Club

WEDNESDAY, MAY 6

2:30 p.m.

Everybody welcome.

Refreshments served.

Greens situated opposite Drill Hall.

Wm. Dusterhoeft, Secretary.

#9 - The annual Opening Day of the Club's lawn bowling season was a big event in Chilliwack for much of the 20th century. There would be a big turnout, speeches, a ceremonial delivery of the season's first bowl (usually by the mayor), and the Chilliwack Progress would announce the upcoming opening, as well as report extensively on the actual event. This image shows the announcement that ran in the April 29, 1942, edition of the Chilliwack Progress regarding the opening of the 1942 season the following week. (Image Credit: Chilliwack Progress Archives)



#10 - This east-facing image was captured on May 7, 1947 - Opening Day for the CLBC that year. In the photo, Harry J. Barber, the “father” of lawn bowling in Chilliwack, is pictured speaking with two fellow bowlers as they examine their bowls prior to the season’s first game later that day. Note how men often bowled in suits back then. Also note one of the lights, evident over Barber’s hat, that were strung across the green to enable night bowling at that time. (Image Credit: Chilliwack Progress Archives)



#11 - Typically the CLBC's bowling season concludes at the end of September or sometimes in early October. However, on rare occasions, the weather has cooperated to allow the season to be extended. This northeast-facing image was captured on November 7, 1949, showing a group of well-dressed bowlers assessing the results of their bowls on a sunny November afternoon. The formal dress codes of the time that are evident in this shot are a relic from the past, as the Club now emphasizes relaxed informality in bowling attire. (Image Credit: Chilliwack Progress Archives)



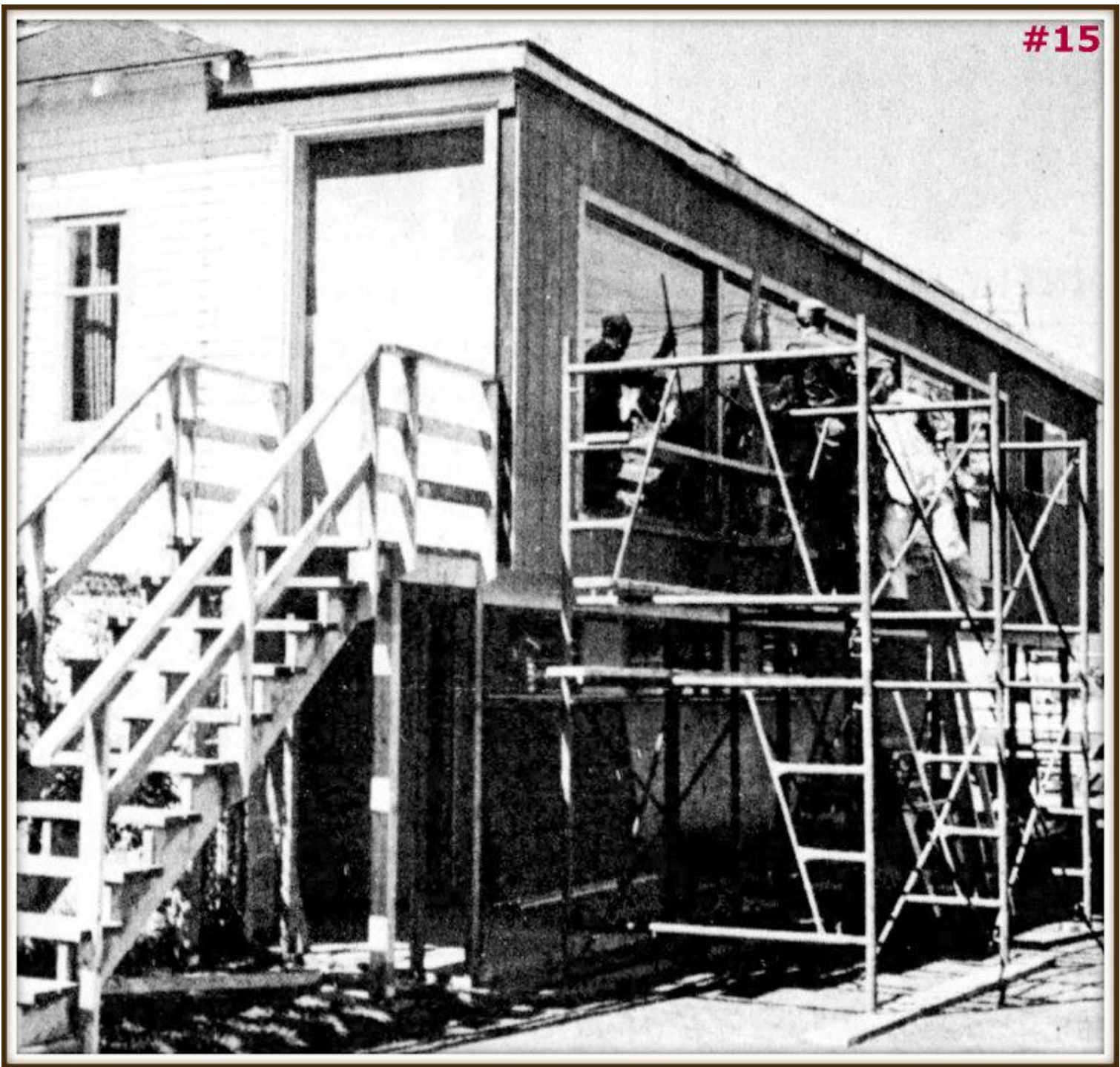
#12 - The annual Opening Day of the Club's lawn bowling season was a big event in Chilliwack for much of the 20th century. There would be a big turnout, speeches, a ceremonial delivery of the season's first bowl (usually by the mayor), and the Chilliwack Progress would announce the upcoming opening (see Image #9), as well as report extensively on the actual event. This west-facing image was captured on April 23, 1958, Opening Day for the Club that year. Mayor T.T. McCammon is pictured as he ceremoniously delivers the first bowl of the season. To the Mayor's right is Harry Barber, the "father" of lawn bowling in Chilliwack. This would be Barber's final Opening Day at the Chilliwack Lawn Bowling Club, as he would pass away the following year. (Image Credit: Chilliwack Progress Archives)



#13 - This 1963 aerial image captures the Chilliwick Lawn Bowling Club, situated at the southeast corner of Edward Street and Princess Avenue, directly across the street from (south of) the Drill Hall. The photo illustrates the Club's relative proximity to Five Corners. Note how at that time parking on both Edward Street and Princess Avenue in the vicinity of the Club was straight-in, as opposed to parallel parking in later years. This image was taken from the same perspective as Image #21, but 53 years earlier. A comparison of the two shots highlights numerous changes in the area in question, with the Club and the Armouries remaining constants. (Image Credit: City of Chilliwack)



#14 - This southwest-facing image was captured on June 29, 1963. On this coolish summer day (only a high of 16 degrees C), the CLBC hosted an inter-club tournament with teams from New Westminster, North Vancouver, Abbotsford, Mann Park, and Stanley Park. There was a large crowd in attendance that day, part of which is viewing the action from the upper floor of the clubhouse. At this time the Club's green was in excellent condition, comparable to that of a golf green. Note how there was no "overhang" extending over the benches by the first floor of the clubhouse; this would not be in place until 1975 (see Image #15). Also note the lighting strung over the green that enabled night bowling at that time, and the white picket fence (with Union Jack flag) by the Edward Street entrance to the Club. (Image Credit: Chilliwack Museum and Archives Collection, Photo Number: 1999.029.035.064)



#15 - In the spring of 1975, the CLBC's clubhouse underwent extensive renovations. Funded by a federal New Horizons grant, the top floor of the structure (but not the lower one) was extended six feet to the north. In addition to providing more space, this extension resulted in "overhang" cover on hot or wet days for those who sat on the benches outside the first-floor locker room/storage area. Refer to Image #14 to see how the Clubhouse appeared before this addition was put in place. This southwest-facing image was captured in early May 1975, showing workers putting the finishing touches on the Club's clubhouse expansion, just in time for that season's Opening Day of May 24, 1975. The six-foot extension to the north (which also included a new second-floor east-facing access door and stairway) is well illustrated in this shot. (Image Credit: Chilliwack Progress Archives)



#16 - On occasion during its nearly a century of existence, it has been necessary for the Club's bowling green to be completely rebuilt. This north-facing image, from the summer of 1989, gives an indication of the significant amount of planning and effort that goes into such an undertaking. That year, the Chilliwack Lawn Bowling Club's green was reconstructed employing an innovative approach. The process involved digging out the green to a depth of nine inches, carting the old soil away, and then replacing it with a special blend of sands. After the sand was levelled, it was seeded with a mixture of bent grass and two types of fescue. The resulting green was judged a success, and superior to the state of previous greens. The photo also illustrates that all the work on this project was completed by the Club's members themselves, as is the case today. (Image Credit: Chilliwack Lawn Bowling Club)



#17 - This 2012 southeast-facing image was captured from the intersection of Edward Street and Princess Avenue, providing a ground-level view of the Chilliwack Lawn Bowling Club's bowling green and clubhouse in their current context. (Image Credit: Chilliwack History Perspectives Collection)



#18 - This 2015 southeast-facing image captures the Club's locker room, located on the lower level of the CLBC's clubhouse on Edward Street. Note the relatively low ceiling, a result of the major 1958 renovation of the clubhouse which involved the ceiling of the then one-story structure being lowered, with the existing space turned into a dedicated locker room and storeroom, with a concrete floor. This lowering of the main floor ceiling, along with adding a further 4 feet in height and 14 feet in length to the overall structure, resulted in a new second floor for the clubhouse. Many decades of lawn bowling preparation, discussions, and camaraderie have transpired within the four walls of this locker room. (Image Credit: Chilliwack History Perspectives Collection)



#19 - This 2021 north-facing image was captured on the CLBC's green. As evident, the condition of the green is currently less than it was due to recent "heat dome" effects. This photo was captured from the same perspective as Image #7, but 96 years later. A comparison of the two shots shows a number of changes in the immediate area, including parallel parking now in effect on Princess Avenue, alterations to the Drill Hall, housing to the east of the Drill Hall, and tall trees now in place. (Image Credit: Chilliwack History Perspectives Collection)



#20 - From the outset, the CLBC instituted a number of annual competitions/tournaments among its members based on gender, experience, mixed groupings, etc. For each competition, a trophy or plaque was obtained or

donated, and each year the winners' names would be noted on the hardware in question. At either the Club's Annual General Meeting or a dedicated awards dinner, winners in all categories would be recognized and duly reported in the Chilliwack Progress. Many of these trophies etc. are now on the second version of themselves, as eventually there was no room left to add new winners' names to the original pieces. On the second floor of the CLBC's clubhouse, some walls are adorned with plaques commemorating various competitions over the years, along with several full trophy cases.

This image showcases the "handsome silver shield", as it was described in the Chilliwack Progress, that was donated by club member T. E. Law for the Club's "Annual Rink Competition". It was first awarded on October 21, 1925, at a "smoker" held at the I.O.O.F. Hall on Wellington Avenue, attended by over 60 CLBC members, to wind up the successful third season at their new home and to present various awards. The plaque includes iconic names from Chilliwack's earlier days such as Ashwell, Boyd, Berry, Thornton, Pearson, Skelton, Webb, Kipp, all of whom were members of a four-man rink that at some point had won the club championship. (Image Credit: Chilliwack History Perspectives Collection)



#21 - This 2016 aerial image captures the Chilliwack Lawn Bowling Club, situated at the southeast corner of Edward Street and Princess Avenue, directly across the street from (south of) the Drill Hall. The photo illustrates the Club's relative proximity to Five Corners. Note how parking on both Edward Street and Princess Avenue in the vicinity of the Club is now parallel, as opposed to the straight-in convention of earlier years. This image was taken from the same perspective as Image #13, but 53 years later. A comparison of the two shots highlights numerous changes in the area in question, with the Club and the Armouries remaining constants. (Image Credit: City of Chilliwack)



#22 - The sport of lawn bowling has been around for centuries and this image gives an appreciation of the passion the game has inspired throughout history. The painting depicts actual events of July 19, 1588, over 430 years ago. Specifically, it represents one of the most famous lawn bowling matches in history. Sir Francis Drake, the legendary English naval hero, and his troops were preparing to meet the invasion of the Spanish Armada, and thus stave off the conquering of England. Sir Drake was also an avid lawn bowler. While lawn bowling that day at Plymouth Hoe on the English Channel, he was urgently advised that the Spanish Armada was in sight, and rapidly approaching English soil. Immortally, he was then quoted as saying, "We still have time to finish the game and to thrash the Spaniards, too." Sir Drake then proceeded to finish the match, which he lost, before embarking on the fight with the Armada, which he won. This dramatic and telling moment was captured in this famous painting, in which Sir Drake is preparing to throw his bowl, while to the left of the image, one of his lieutenants is pointing to the approaching Spanish Armada. A copy of this painting hangs in the clubhouse of the Chilliwack Lawn Bowling Club. (Image Credit: britishbattles.com)

City of Chilliwack

1922

Dr. 1922

Cr

June 15 To cheque
 Aug 29 To ck.
 Sept 30 To ck.
 Sept 26 To ck.

345⁰⁰5²⁰26²⁵40⁴³416.88

1923

Sept 27 rock # 50

66.68

1924

Sept 29 rock # 78

53⁷⁵

June 15 Purchase Price Lots
 Lots 9410
 Sept 1922 Taxes
 Lots 22923
 1922 Taxes
 " " " " " "
 Aug. Reg. Road Fees

345⁰⁰26²⁵40⁴³5²⁰416.88

1923 taxes on
 Lots 22 & 23. B. 24
 Div. "E"

40⁴³

1923 taxes on Lots
 9410. Block 11.
 Div. "A"

26²⁵

1924

Tax demand
 4 Lots.

53⁷⁵

#23 - When the Chilliwack Lawn Bowling Club was formed on September 29, 1921, an incorporated venture called The Chilliwack Lawn Bowling Company Limited (the Company) was also created. The Company's immediate mandate, in addition to raising capital, was to identify and purchase a suitable site to construct a bowling green, thus establishing a permanent home for the CLBC. In 1922, the Company did find an appropriate site for the CLBC's long-term home and it initiated a somewhat complex purchase transaction. The land in question comprised four vacant lots at the southeast corner of Princess Avenue and Edward Street, directly across from the nine-year-old Chilliwack Drill Hall (aka the Armouries). Two of the lots were owned by the City of Chilliwack, while the other two belonged to Chilliwack pioneer William Knight.

In June 1922, the Company bought the two lots from the City while two months later, in August 1922, the two remaining lots were purchased from William Knight. This image presents the entry on Page 26 of the Club's original accounting ledger book, indicating that on June 15, 1922, it paid \$345 to the City of Chilliwack for two of the four lots in question. Note that the total property taxes for the Club's four lots was only \$53.75 in 1924. (Image Credit: Chilliwack Lawn Bowling Club)